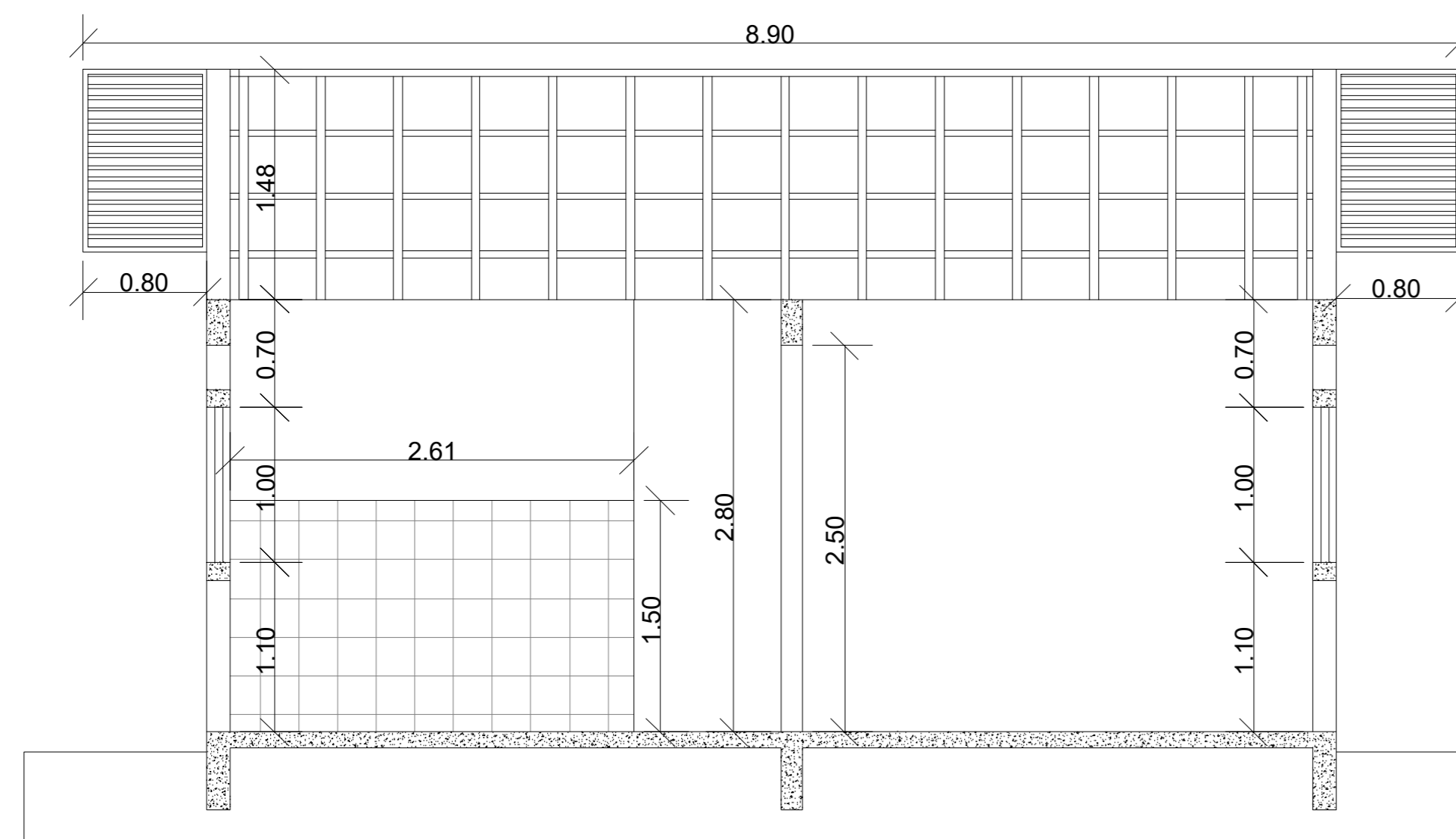
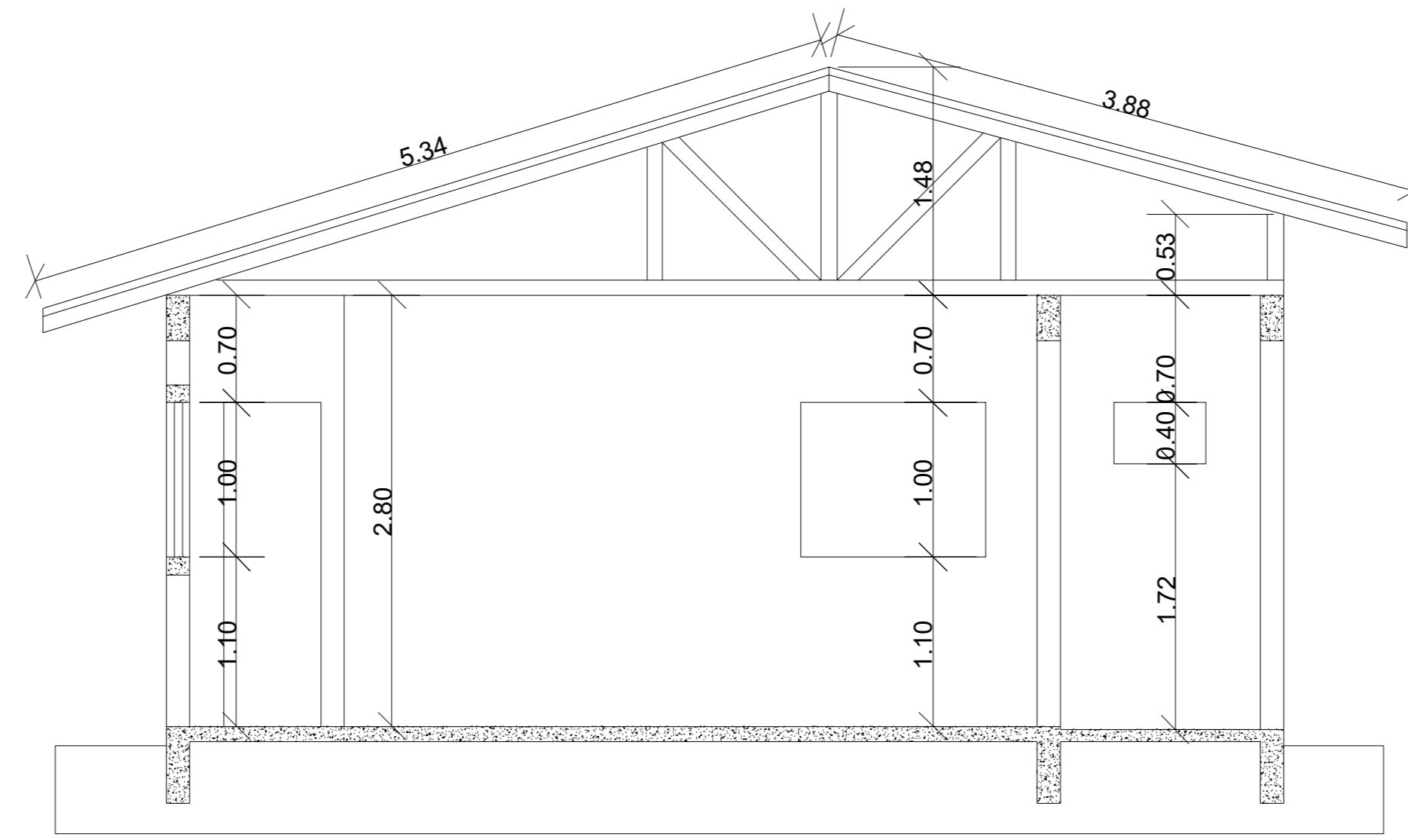


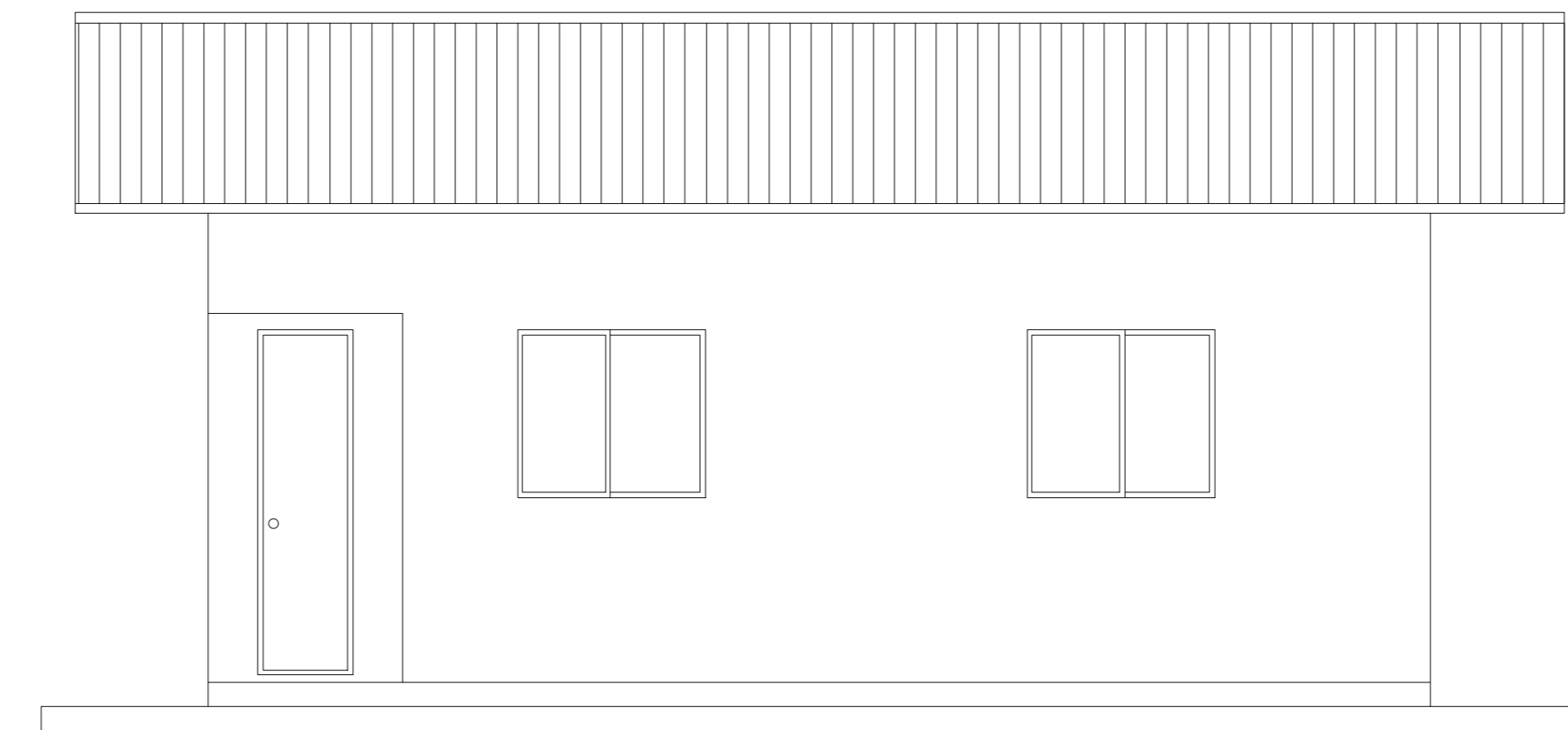
COBERTURA ESC:1/50



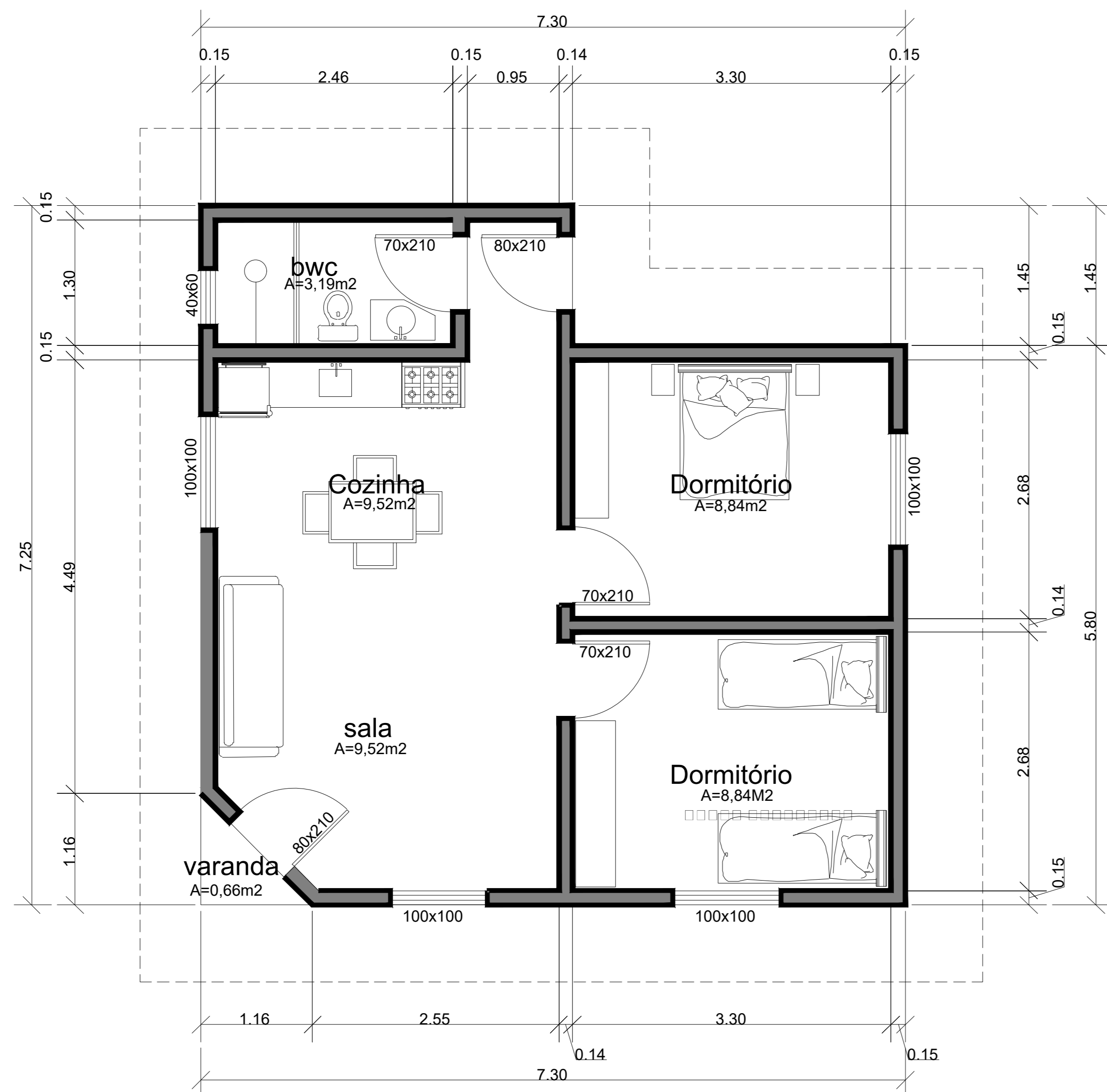
CORTE AA ESC:1/50



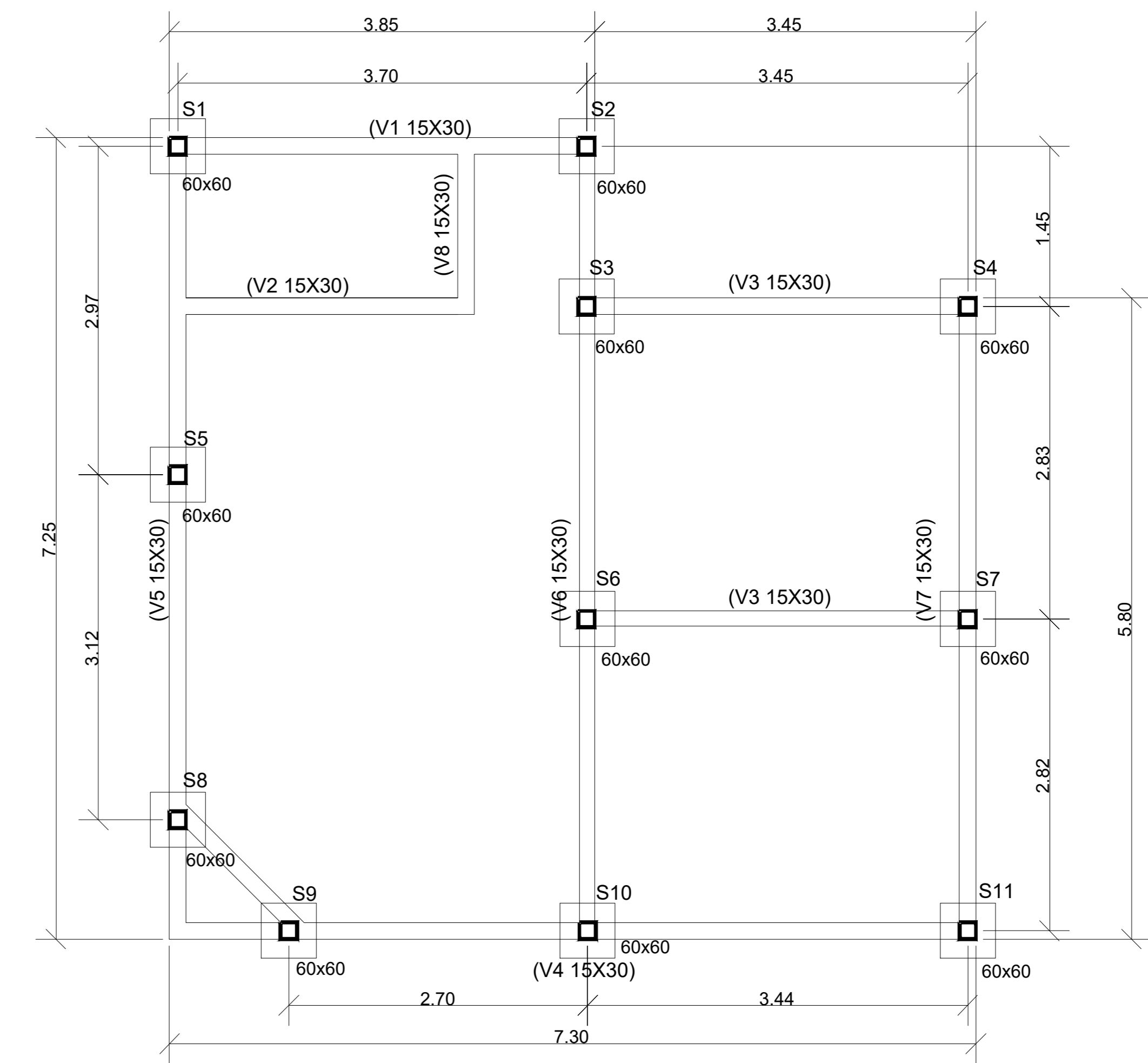
CORTE BB ESC:1/50



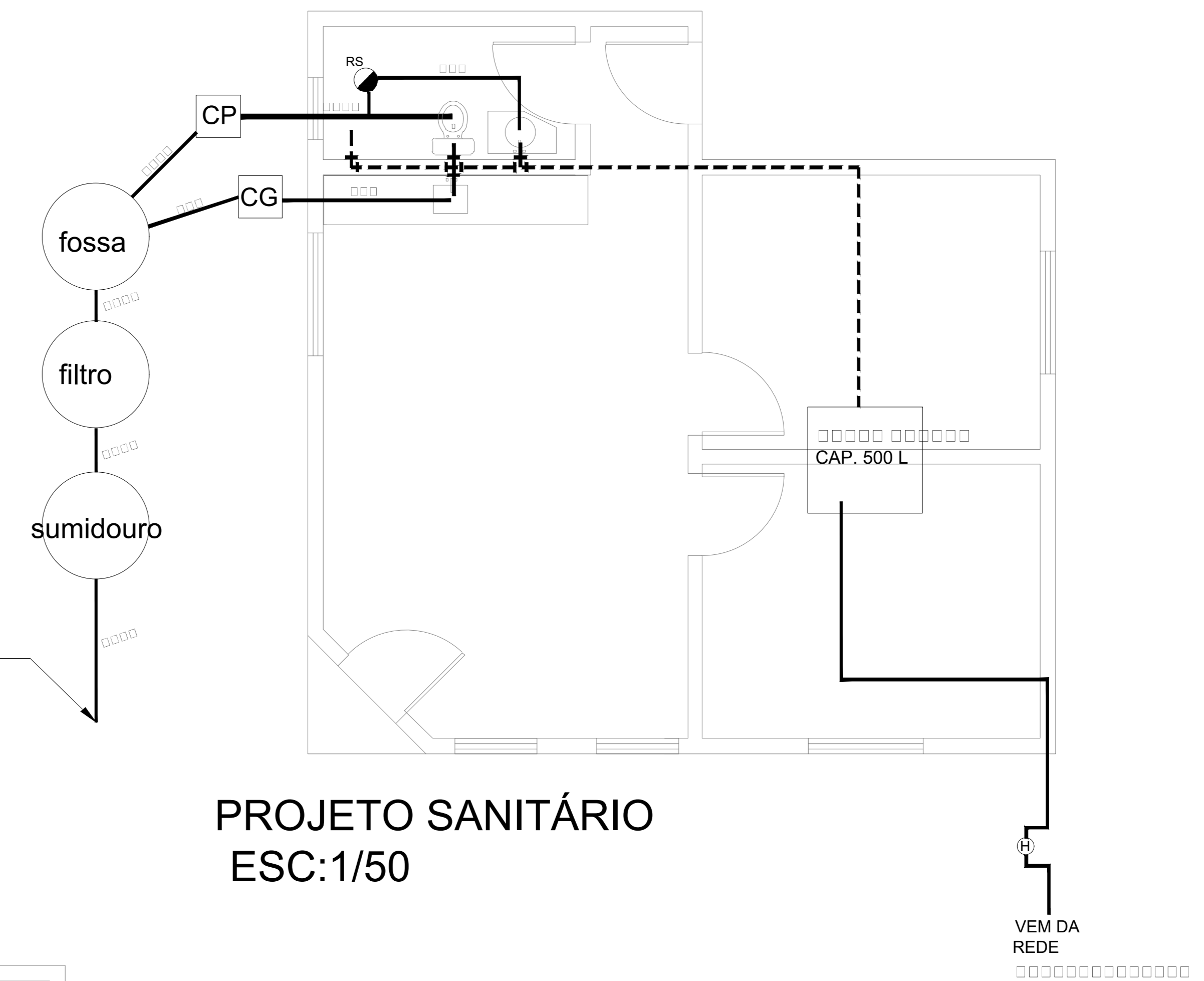
FACHADA FRONTAL ESC:1/50



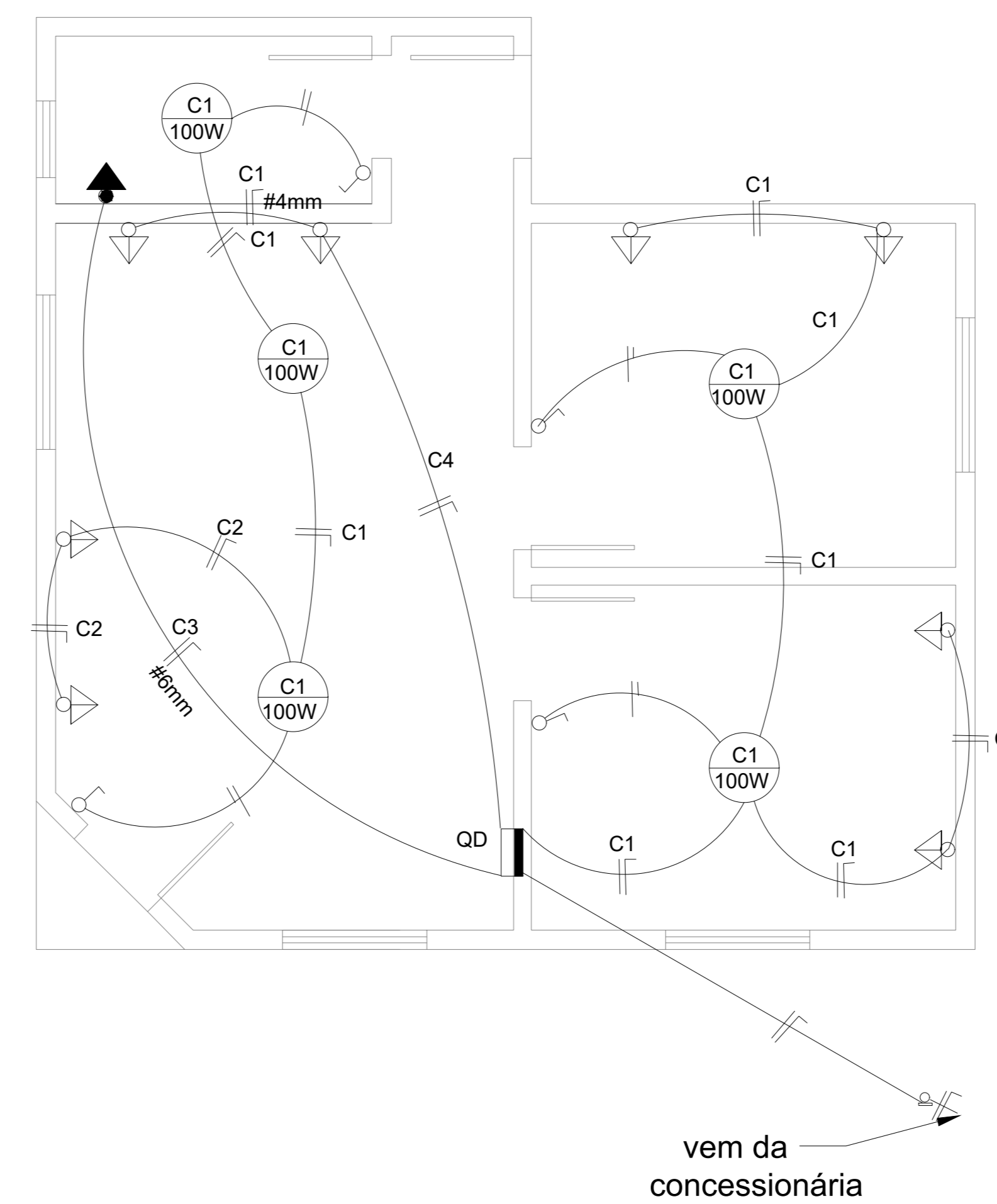
PLANTA BAIXA ESC:1/50



PROJETO ESTRUTURAL ESC:1/50



PROJETO SANITÁRIO ESC:1/50



vem da concessionária

PROJETO: CASA DE ALVENARIA		
 PETERSON FINKLER DE SOUZA ENGENHEIRO CIVIL - CREA/SC 59821-0		PREFEITURA MUNICIPAL DE PONTE ALTA
LOCAL: PONTE ALTA - SC	DATA: MAIO/2022	FRANCHA ÚNICA
PREFEITURA MUNICIPAL DE PONTE ALTA		
OBRA: CASA DE ALVENARIA	DESENHO: PETERSON	
DESCRIÇÃO: Projetos: Arquitetônico, Elétrico, Sanitário e Estrutural	ÁREA: 47,92 m²	