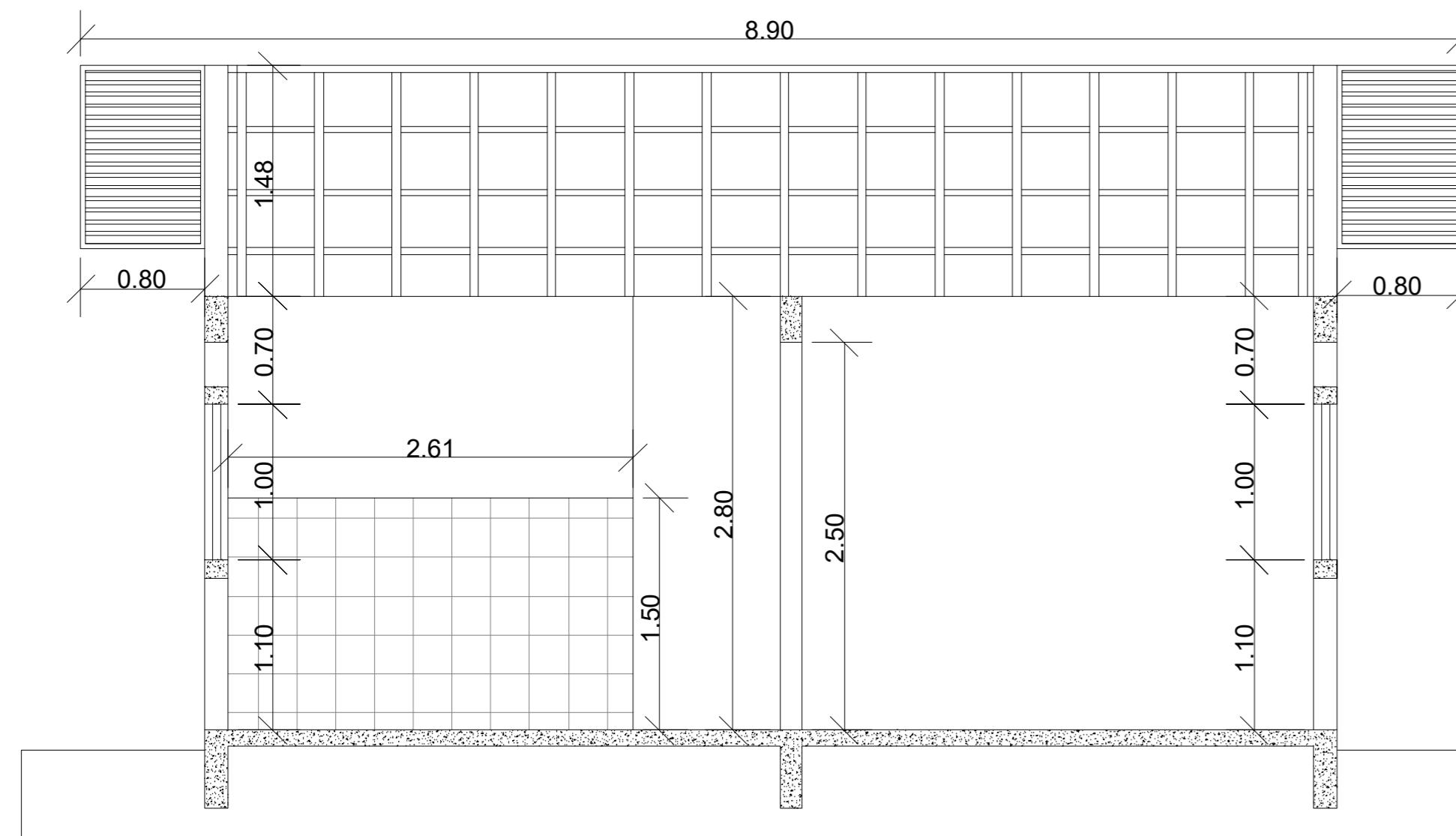
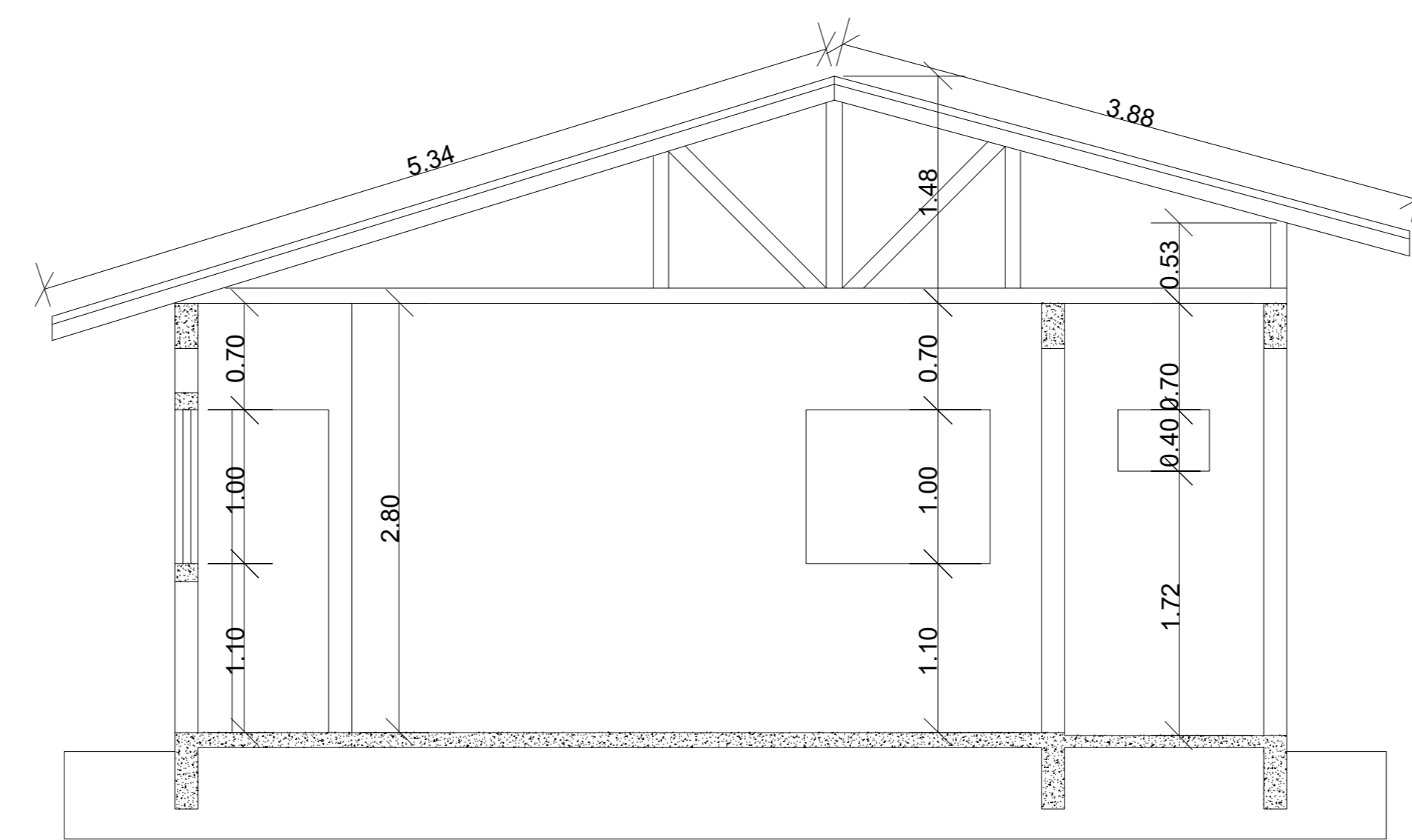


telha de fibrocimento 6 mm

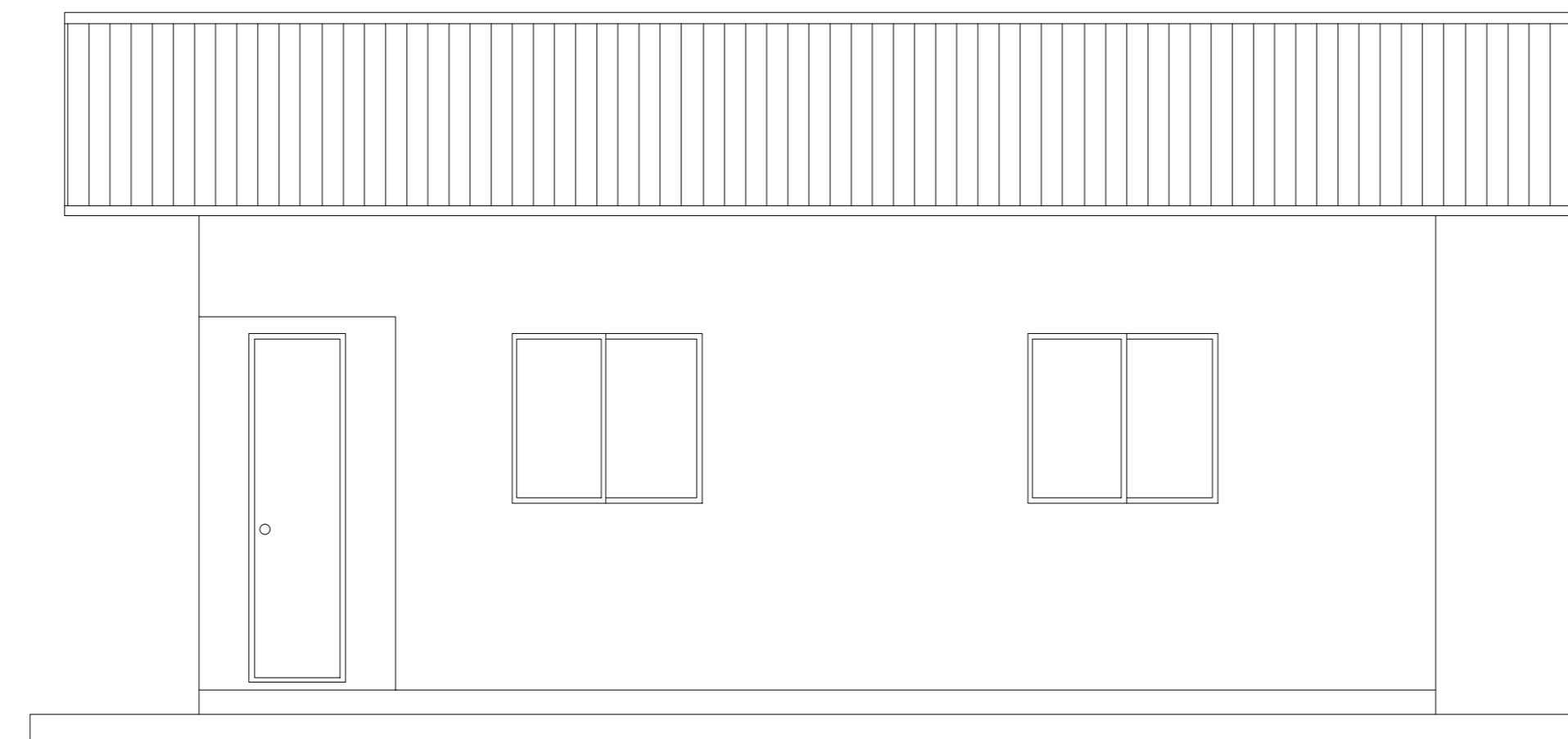
COBERTURA ESC:1/50



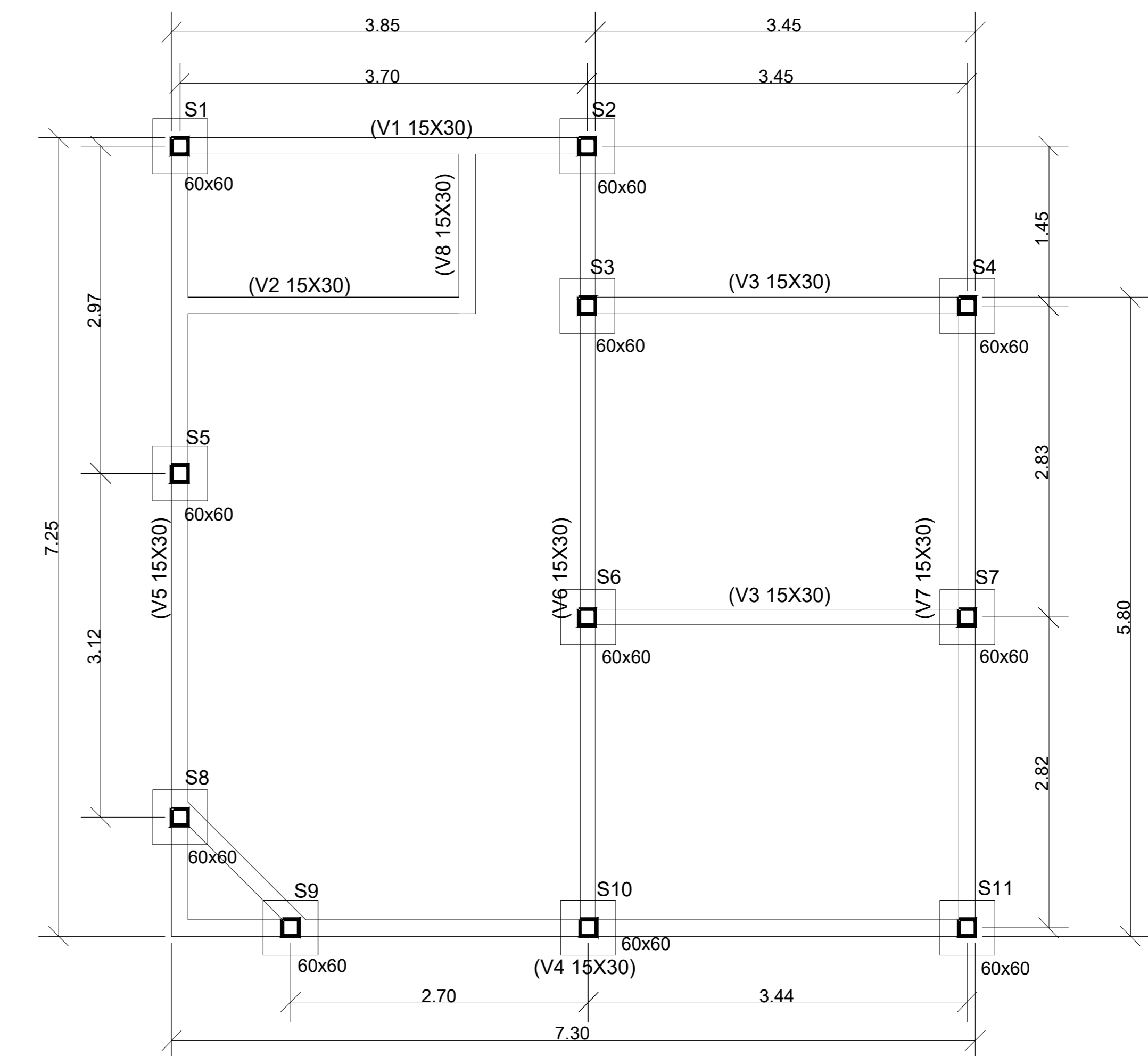
CORTE AA
ESC:1/50



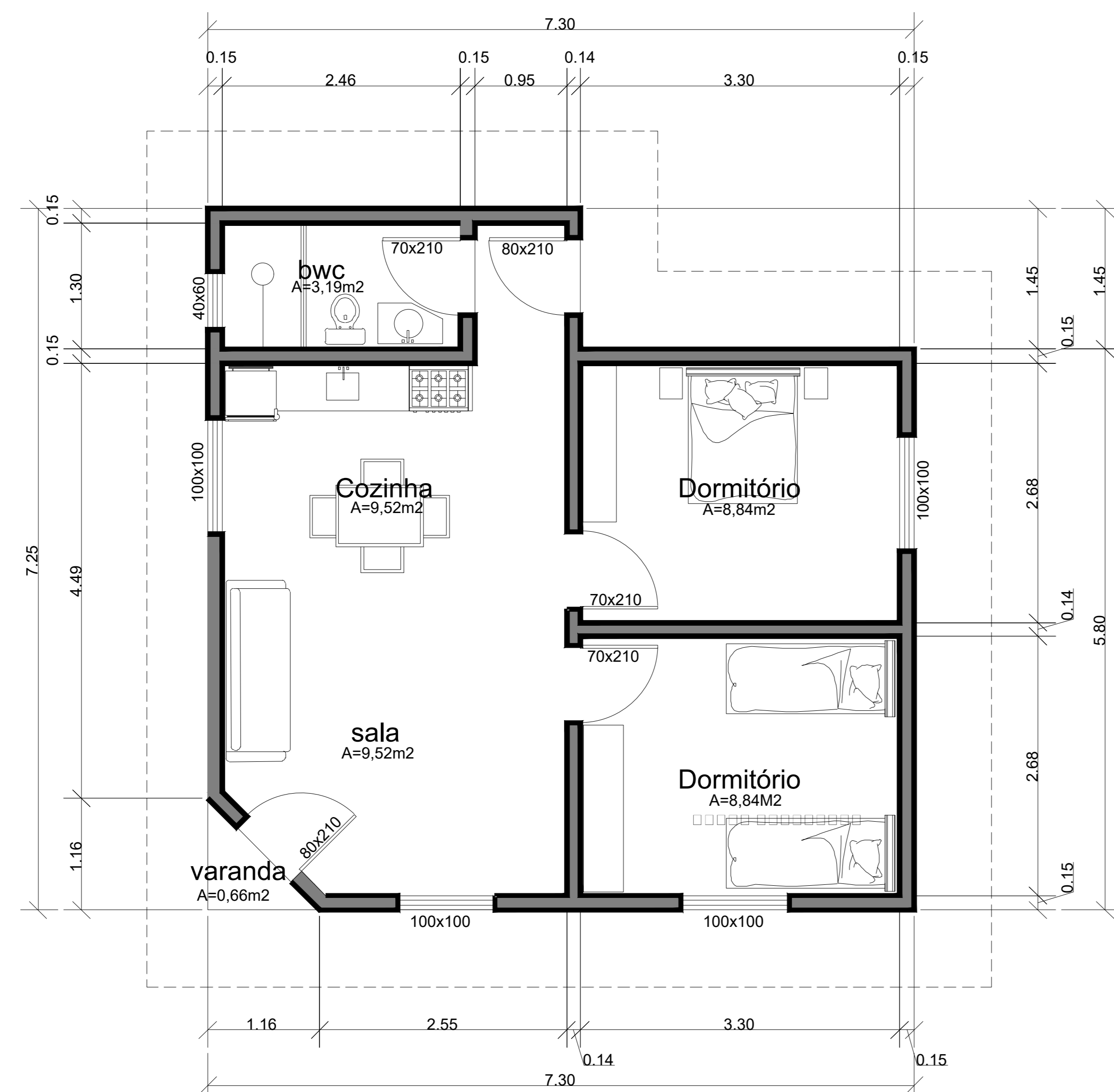
CORTE BB
ESC:1/50



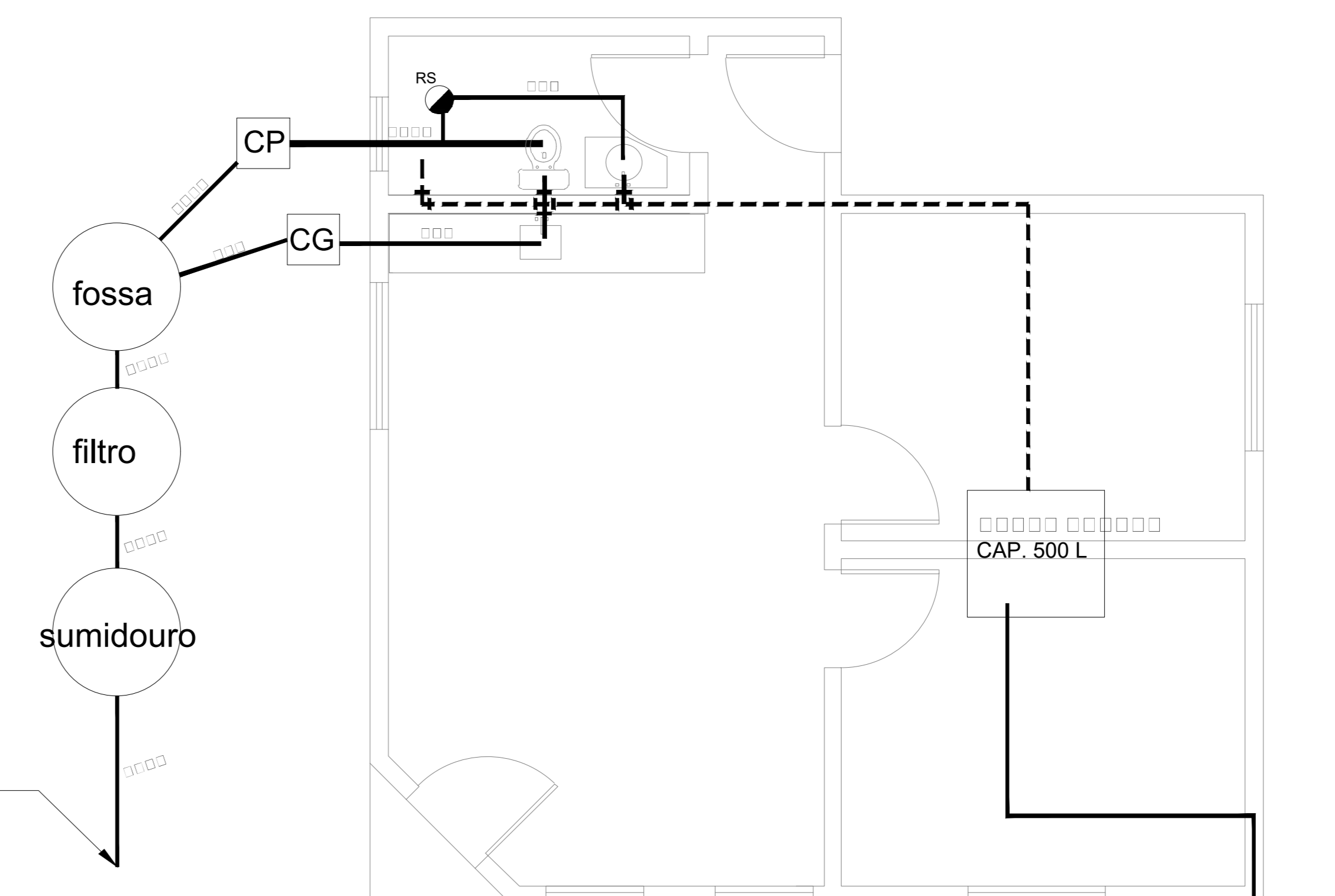
FACHADA FRONTAL
ESC:1/50



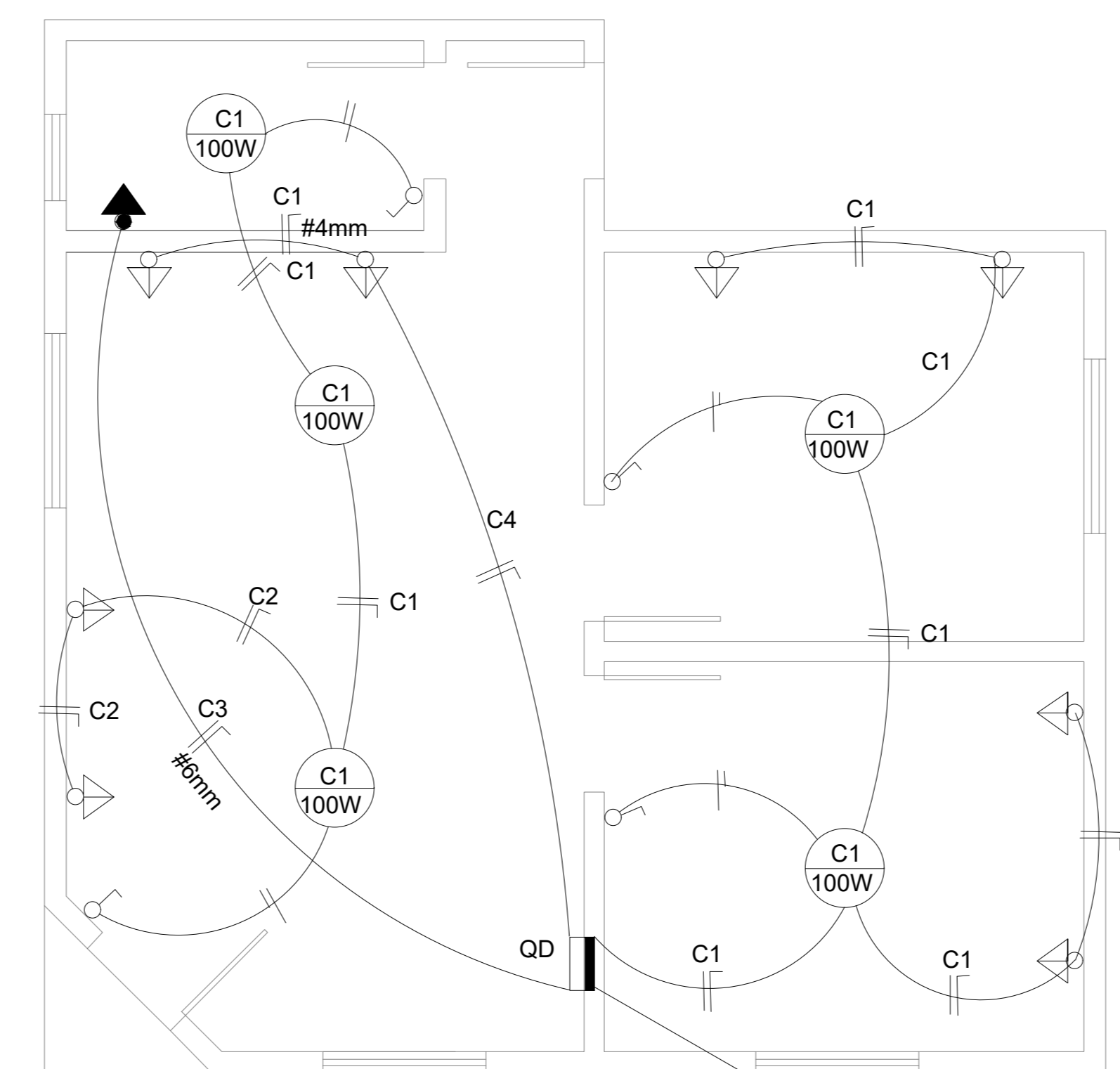
PROJETO ESTRUTURAL
ESC:1/50



PLANTA BAIXA ESC:1/50



PROJETO SANITÁRIO
ESC:1/50



vem da
concessionária

PROJETO: CASA DE ALVENARIA	
 PETERSON FINKLER DE SOUZA ENGENHEIRO CIVIL - CREA/SC 59821-0	
PREFEITURA MUNICIPAL DE PONTE ALTA	
LOCAL: PONTE ALTA - SC	DATA: MAIO/2022
PREFEITURA MUNICIPAL DE PONTE ALTA	
OBRA: CASA DE ALVENARIA	DESENHO: PETERSON
DESCRIÇÃO: Projetos: Arquitetônico, Elétrico, Sanitário e Estrutural	47,92 m2