

RELAÇÃO DO AÇO

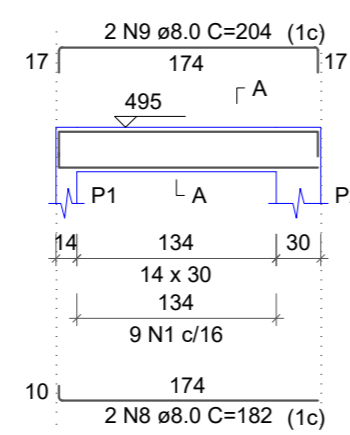
V1  
V4  
V7

V2  
V5

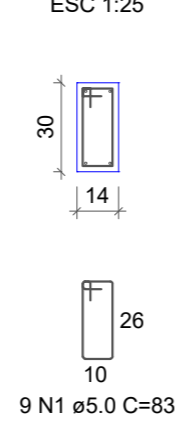
V3  
V6

AÇO	N	DIAM (mm)	QUANT	C.UNIT (cm)	C.TOTAL (cm)
CA60	1	5.0	29	83	2407
	2	5.0	17	103	1751
	3	5.0	2	148	296
	4	5.0	49	99	4851
	5	5.0	2	139	278
	6	5.0	2	163	326
	7	5.0	2	147	294
CA50	8	8.0	2	182	364
	9	8.0	6	204	1224
	10	8.0	4	190	760
	11	8.0	2	414	828
	12	8.0	2	143	286
	13	8.0	2	183	366
	14	8.0	4	364	1456
	15	8.0	4	143	572
	16	8.0	2	413	826
	17	8.0	2	148	296
	18	8.0	2	163	326
	19	8.0	2	168	336
	20	8.0	2	110	220

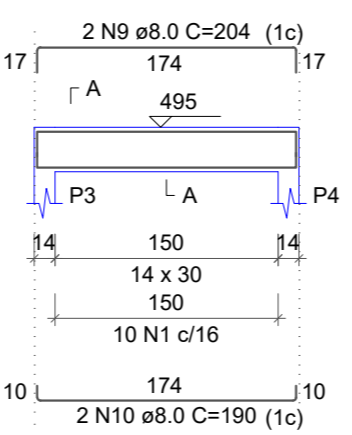
V1  
ESC 1:50



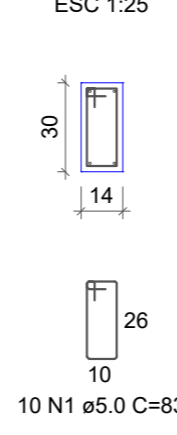
SEÇÃO A-A  
ESC 1:25



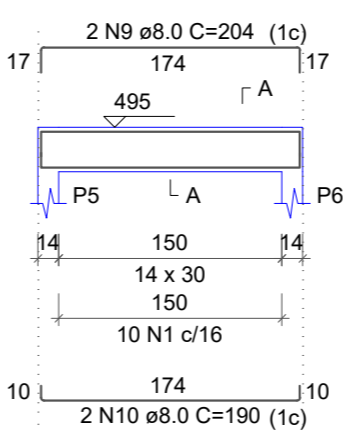
V2  
ESC 1:50



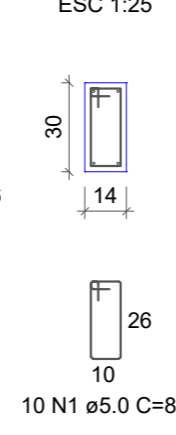
SEÇÃO A-A  
ESC 1:25



V3  
ESC 1:50



SEÇÃO A-A  
ESC 1:25

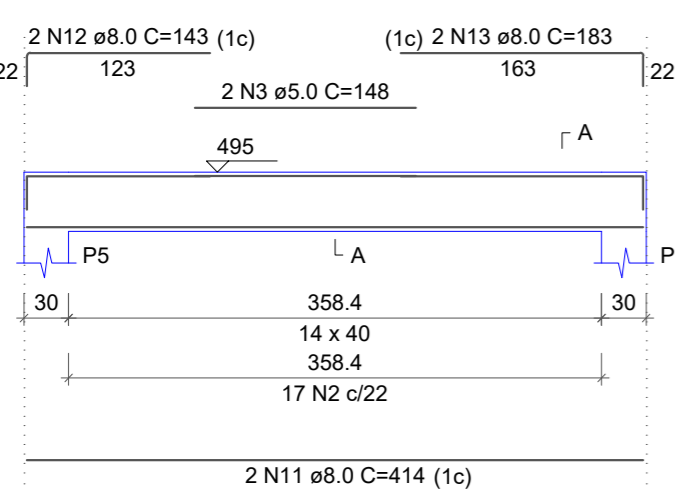


RESUMO DO AÇO

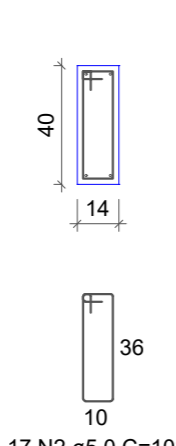
AÇO	DIAM (mm)	C.TOTAL (m)	PESO + 10% (kg)
CA50	8.0	78.6	34.1
CA60	5.0	102	17.3
PESO TOTAL (kg)			
CA50			34.1
CA60			17.3

Volume de concreto (C-30) = 1.11 m<sup>3</sup>  
Área de forma = 18.75 m<sup>2</sup>

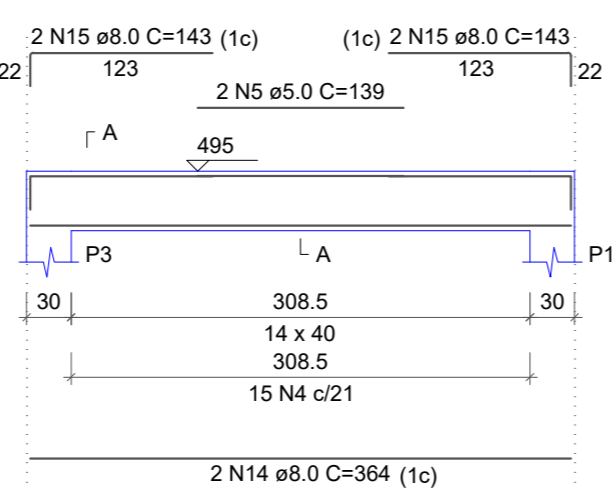
V4  
ESC 1:50



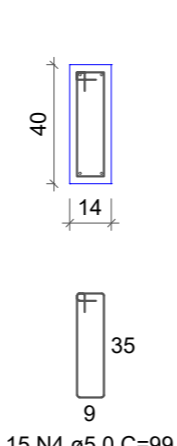
SEÇÃO A-A  
ESC 1:25



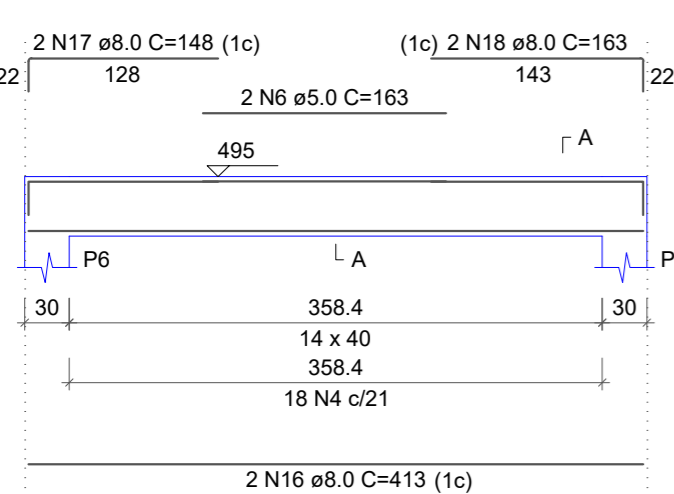
V5  
ESC 1:50



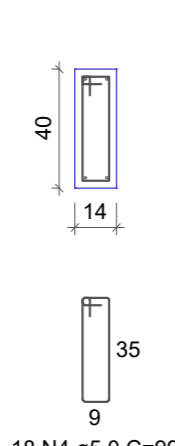
SEÇÃO A-A  
ESC 1:25



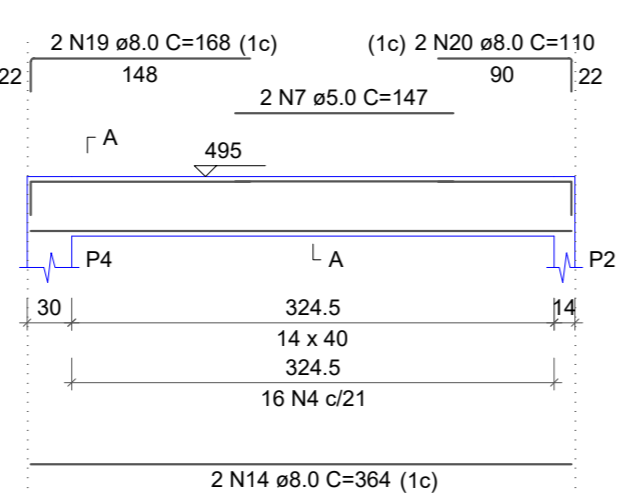
V6  
ESC 1:50



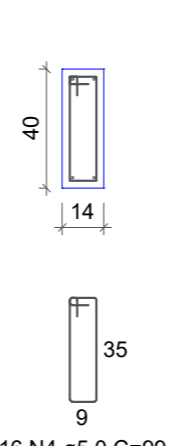
SEÇÃO A-A  
ESC 1:25



V7  
ESC 1:50



SEÇÃO A-A  
ESC 1:25



PMSJ:

DESENVOLVIMENTO E GERENCIAMENTO

GABINETE DO DEPUTADO  
MARCUS MACHADO



RUA. MINISTRO PEDRO DE TOLEDO, 218 SALA 01  
CORAL - LAGES - SC CEP.: 88509-520  
FONE: (49) 0000-0000

PROJETO:

PROJETO ESTRUTURAL

RESPONSÁVEIS TÉCNICO:

FRANCIELY REGINA DOS SANTOS VIEIRA  
ARQUITETA E URBANISTA

CAU-SC A193325-6

MICHELE PILAR APPOLINARIO  
ENG. CIVIL

CREA-SC 115469-2

PROPRIETÁRIO DO EMPREENDIMENTO:

MUNICÍPIO DE PONTE ALTA  
Rua Geremias Alves da Rocha, nº 130 - Centro

(ASS. RESPONSÁVEL)

83.755.850/0001-27  
(INEP-CNPJ)

CONTEÚDO:

VIGAS CAIXA D' ÁGUA

OBS.:

CAPELA MORTUÁRIA  
ÁREA DE EDIFICAÇÃO: 74,60 m<sup>2</sup>

ENDEREÇO:  
RUA ITAPEMA, SNº - BAIRRO VILA NOVA - PONTE ALTA/SC

DESENVOLVIMENTO:  
CRISTINA MARIA MAZIERO DE LIZ - TEC. EM EDIFICAÇÕES

DATA:  
SET  
2021

Nº DO DESENHO:  
EST  
08/09